



## *MOXA PComm Pro*

*Professional Serial Comm Development Tool for  
Windows XP, Windows 2000, Windows NT,  
Windows 95/98/ME*

### Overview

Software developers must often be confused by Microsoft's Win32 COMM API, used to develop serial comm applications under Windows XP, Windows 2000, Windows NT, and Windows 95/98/ME. The confusion stems from the fact that Win32 COMM API is a general purpose utility, with very complex syntax.

MOXA PComm Pro offers you a better solution. No matter which brand of multiport serial board you have used, standard COMs, Digi, Equinox, Moxa, or others, MOXA PComm Pro is the right tool for you.

MOXA PComm Pro is aimed to help you:

- Speed up serial comm application development
- Troubleshoot serial comm problems between two devices
- Analyze serial comm performance

MOXA PComm Pro includes easy-to-use API functions that are specially designed for async communications, eliminating the problems inherent in Microsoft's more complex Win32 API, and reducing development time and cost.

In addition, MOXA PComm Pro provides useful utilities, such as Data Scope and Performance Analyzer, that help you quickly troubleshoot any serial comm problem.

#### *Easy to Develop*

MOXA PComm Pro provides more than 50 easy-to-use API functions with VB, C/C++, and Delphi interface, that are specially designed for serial comm applications. Compare this with Microsoft's Win32 COMM API, in which the same functions are general purpose, and thus very complicated for serial comm developers.

MOXA PComm Pro also supports built-in functions for file transfer protocols, such as ZModem, YModem, XModem, Kermit, and ASCII, making it easier than ever before to program file uploading-and-downloading utilities.

#### *Easy to Troubleshoot*

The Data Scope utility, which uses two standard COM ports, behaves the same as a PC-based data scope, letting you set a trigger condition, capture comm data, and monitor signal status with time stamp on an RS-232 line. The under-monitor line speed can be as high as 921.6 Kbps, depending on the speed of the COM ports. You can also save data and status to your hard disk for later analysis, and with the supplied debugging cable, comm activities can be monitored on-line without interference.

#### *Wide Compatibility*

MOXA PComm Pro supports not only standard COM ports, but all multiport boards that support Win32 COMM API, including Digi, Equinox, and Moxa.

## Features

- Easy-to-use API (more than 50 functions)
- Supports ZModem, YModem, XModem, Kermit, and ASCII file transfer protocols
- Supports VB, C/C++, Delphi interface, and example programs
- Supports serial comm speeds up to 921.6 Kbps
- Supports Multi-Session Terminal Emulator (VT100, ANSI)
- Supports Data Scope utility to monitor comm line activity (debugging cable included)
- Supports serial comm Performance Analyzer
- Compatible with any standard COM ports that support Win32 COMM API
- Free lifetime upgrades
- Royalty Free

## System Requirements

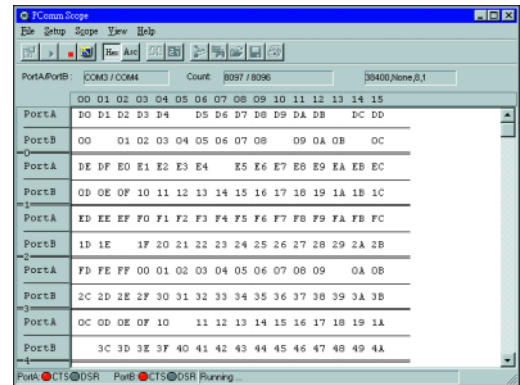
- Intel-compatible PC processor
- Windows XP, Windows 2000, Windows NT (3.51/4.0), or Windows 95/98/ME
- 2.5 MB of hard disk space

## System Requirements

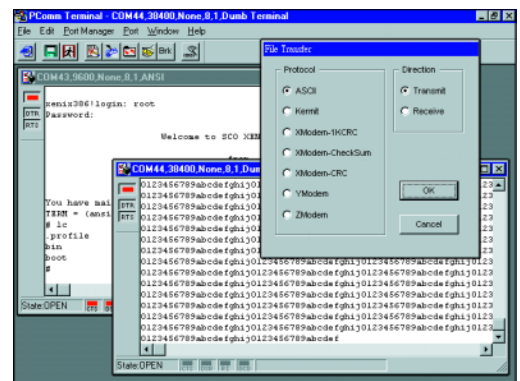
SL - 901

- MOXA PComm Pro for Windows XP, Windows 2000, Windows NT, Windows 95/98/ME
- 1 user license
- Debugging cable
- CD and manual

## Data Scope



## Terminal Emulator



## Performance Analyzer

The screenshot shows the Performance Analyzer window with a table of throughput and error rates for various COM ports. The table has columns for Port, Rx Length, Throughput (bytes/s), and Error.

Port	Rx Length	Throughput (bytes/s)	Error
COM3	102400	5964	
COM4	102400	5894	
COM5	100352	5813	
COM6	100352	5853	
COM7	104448	6102	
COM8	102400	5991	
COM9	102400	5925	
COM10	104448	6027	
COM31	100352	5886	
COM32	100352	5798	
COM33	100352	5792	
COM34	100352	5784	
COM35	100352	5783	
COM36	100352	5882	
COM37	100352	5873	
COM38	100352	5839	

COM3, COM38 (16 Ports) | 57600, None, 81, RTS/CTS, | 00:00:00 | Ready



**Moxa Technologies Co., Ltd. (Headquarters)**  
 Fl.4, No.135, Lane 235, Pao-Chiao Rd., Shing Tien City, Taipei, Taiwan, R.O.C.  
 Tel: +886-2-8919-1230 Fax: +886-2-8919-1231  
 info@moxa.com.tw

**USA**  
**Moxa Networking, Inc.**  
 Tel: +1-732-738-4303 Fax: +1-732-738-4884  
 info@moxa.com

**Germany**  
**Moxa Technologies GmbH**  
 Tel: +49 2405-462766 Fax: +49 2405-462799  
 info@moxatech.de

**China**  
**Moxa Tech Beijing, Inc.**  
 Tel: +86-10-6872-3960/61 Fax: +86-10-6872-3958  
 moxa@moxa.com.cn